



Digital Security Systems

JDS Digital Security Systems

P.O. Box 374

New Baltimore, MI 48047

(586) 749-6342

(734) 629-1555

www.jdssecuritysoftware.com

Softsite32 Application Monitor QuickStart 7/10/2008

SSappmon.exe is used to monitor the health of any enterprise instance running including groups. It will kill and restart Enterprise when a problem occurs. SSappmon.exe will also start a group that has been closed intentionally or unintentionally. The application is designed to run on the same computer running enterprise

ssAppMon.exe is installed by Softsite32 Surveillance products automatically. The installed files related to this application are;

ssAppMon.exe	The Application
ssAppMon.ini	The Settings for the Application
ssAppMon.txt	Text file to track events

Command line options for Application Monitor (added to the end of the command line of the shortcut for the application)

| /AUTO Auto start the application on launch. Also available in INI

*** Note: Softsite32 must be installed on the PC that is running ssAppMon**

**** Note: This will only work with Groups running under Enterprise**

*****Note: Groups icons must be located on the desktop unedited**

By default Application Monitor launches at the start of any group of Enterprise. This can be disabled by editing the Softsite.ini here

```
[Application Monitor]
LaunchWithSS32 = FALSE
```

This is installed TRUE



Digital Security Systems

JDS Digital Security Systems

P.O. Box 374

New Baltimore, MI 48047

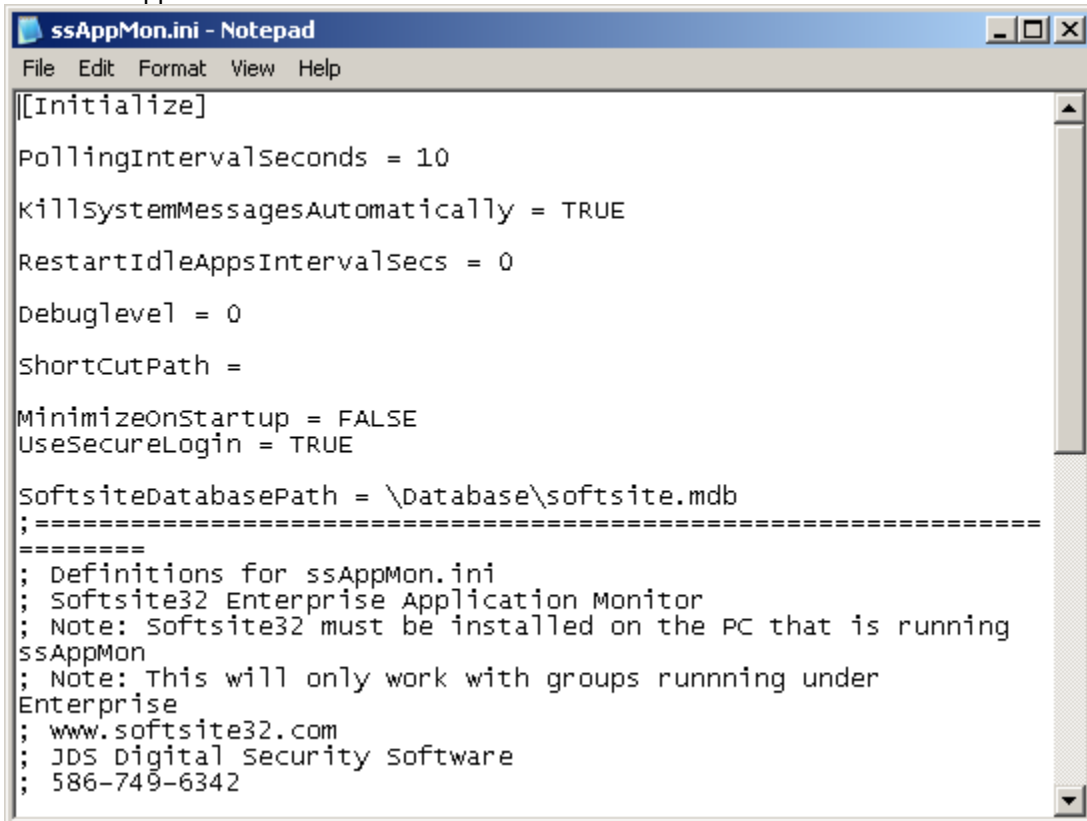
(586) 749-6342

(734) 629-1555

www.jdssecuritysoftware.com

1. Setup Application Monitor

- 1) Find the enterprise installation directory(C:\Program Files\Softsite32 Enterprise\ or C:\Program Files (x86)\Softsite32 Enterprise)
- 2) Edit the ssappmon.ini



```
ssAppMon.ini - Notepad
File Edit Format View Help

[[Initialize]

PollingIntervalSeconds = 10
KillSystemMessagesAutomatically = TRUE
RestartIdleAppsIntervalSecs = 0
DebugLevel = 0
ShortCutPath =

MinimizeOnStartup = FALSE
UseSecureLogin = TRUE

SoftsiteDatabasePath = \Database\softsite.mdb
;=====
;=====
; Definitions for ssAppMon.ini
; Softsite32 Enterprise Application Monitor
; Note: softsite32 must be installed on the PC that is running
ssAppMon
; Note: This will only work with groups running under
Enterprise
; www.softsite32.com
; JDS Digital Security software
; 586-749-6342
```

- 3) Application Monitor is setup to work by default, and it only needs database access if you wish to password protect the application. You will need to set the SoftsiteDatabasePath and make sure UseSecureLogin is True.

If you store your shortcuts in the startup folder, you will need to point the ShortCutPath to the startup folder.

- 4) Save the INI file

2. Launch Application Monitor from the Enterprise application directory

- 1) By default the application will launch and start monitoring automatically, this can be turned off in the ini. Application monitor will launch when a group is started.

3. Monitoring Panel

- 1) The application is contained in a monitoring panel.



Digital Security Systems

JDS Digital Security Systems

P.O. Box 374

New Baltimore, MI 48047

(586) 749-6342

(734) 629-1555

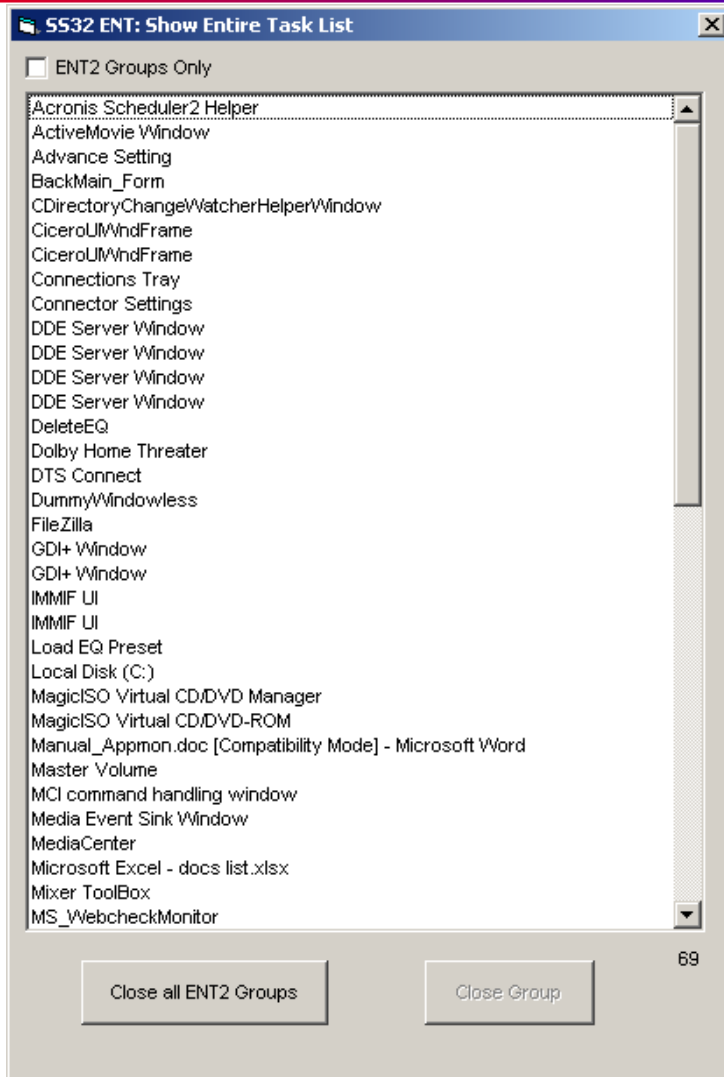
www.jdssecuritysoftware.com

1. **Number**
 - Number of Groups in list
2. **Group Name**
 - Name of group being monitored and detected
3. **Status**
 - Current Status of groups being monitored. Idle, Suspended and Running
4. **1st Found**
 - Date and Time when group was first launched
5. **Last Updated**
 - Last poll time
6. **Task List**
 - Displays all running tasks, from here you can close all ENT2 groups.



Digital Security Systems

JDS Digital Security Systems
P.O. Box 374
New Baltimore, MI 48047
(586) 749-6342
(734) 629-1555
www.jdssecuritysoftware.com



7. **Stop**
 - Select to stop application monitor from running
8. **Poll Interval Seconds**
 - Current Set Poll time
9. **Open or Secure Access**
 - Displays which access mode is engaged, when secure mode is engaged a password is needed for all functions
10. **Current Date and Time**
 - Displays current date and time



Digital Security Systems

JDS Digital Security Systems

P.O. Box 374

New Baltimore, MI 48047

(586) 749-6342

(734) 629-1555

www.jdssecuritysoftware.com

ssAppMon.ini settings

PollingIntervalSecs	Seconds in between application polling for group health
KillSystemMessagesAutomatically	Kills system messages which can cause groups not to restart without intervention
RestartIdleAppsIntervalSecs	Close and restart any group that is idle or not streaming. 0 disables
Debuglevel	Set only when advised by JDS Technical support
ShortCutPath	Path where group icons are located if elsewhere from desktop
MinimizeonStartup	Launches application minimized
UseSecureLogin	Enables password protection, for stopping, closing application
SoftsiteDatabasePath	Path to camera database, can be Relative(\), Absolute(c:\), or UNC(\\)